

# Your LinkedIn performance report sample

## New followers

New LinkedIn fans you've made during this period



7 516

New followers

↑ 8.2%

Previous: 7 345

Source: whatagraph.com | ID: 6565313

## Total followers

Total number of followers your account had at the end of report period



12 214

New followers

↑ 27.2%

Previous: 6 984

Source: whatagraph.com | ID: 6565313

## Network by country

Distribution of your followers by their city location



New York

42.5%

Most of your followers work in this city

↑ 21.4%

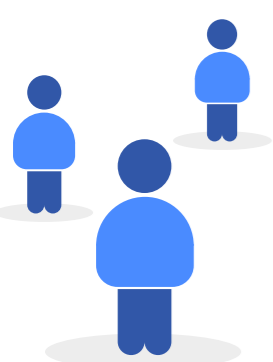
Previous: 32.8%

Source: whatagraph.com | ID: 6565313

USA	42.5%	↑ 7.87%
Greenland	17.7%	↑ 1.15%
Australia	11.3%	↑ 5.1%
Netherlands	3.7%	↓ 25.8%
China	2.4%	↑ 12.8%
Japan	2.4%	↑ 12.8%

## Network by function

Distribution of your followers by their job function



Creativewriting

70.5%

Most popular job function among your followers

↑ 8.21%

Previous: 65.8%

Source: whatagraph.com | ID: 6565313

Social media	60.5%	↑ 11.87%
Writing	17.7%	↑ 12.15%
Marketing	11.3%	↑ 10.1%
Design	3.7%	↓ 11.8%
Management	2.4%	↑ 11.8%
Human resources	2.4%	↑ 11.8%

## Network by industry

Distribution of your followers by industry type



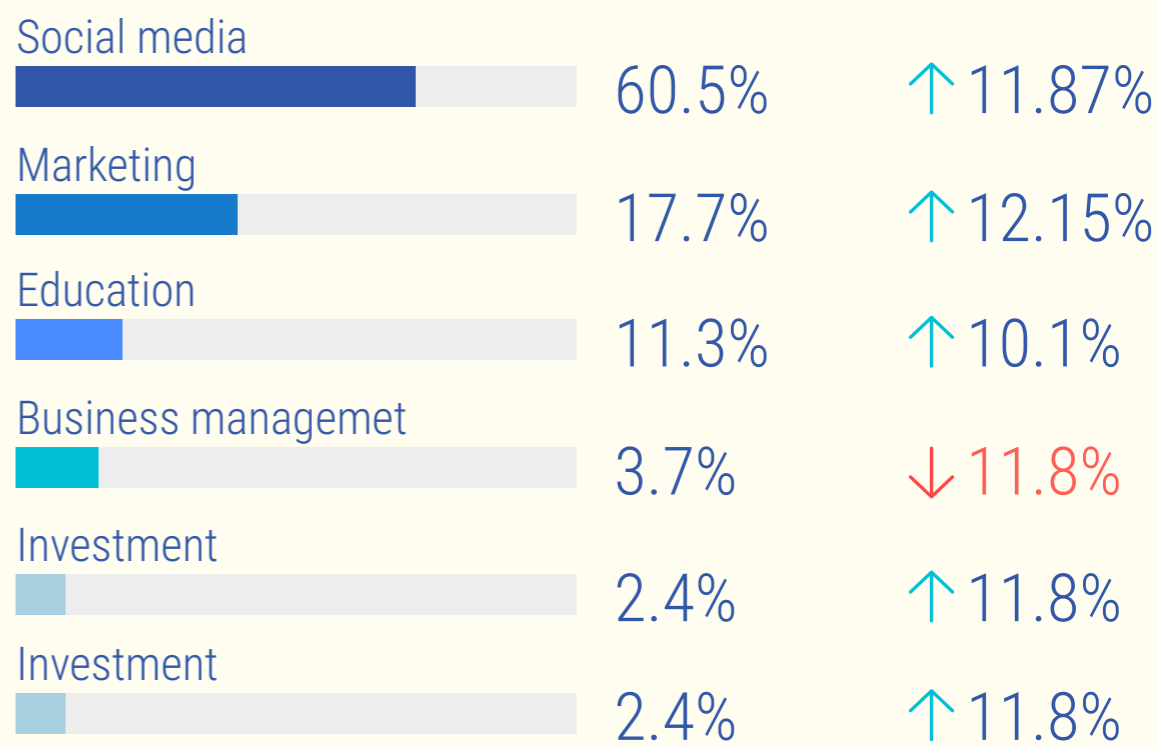
Social media

60.5%

Most of your followers work in this industry

↑ 8.21%

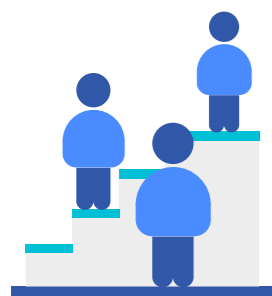
Previous: **50.4%**



in Source: whatagraph.com | ID: 6565313

## Network by seniority

Distribution of your followers by the degree of seniority



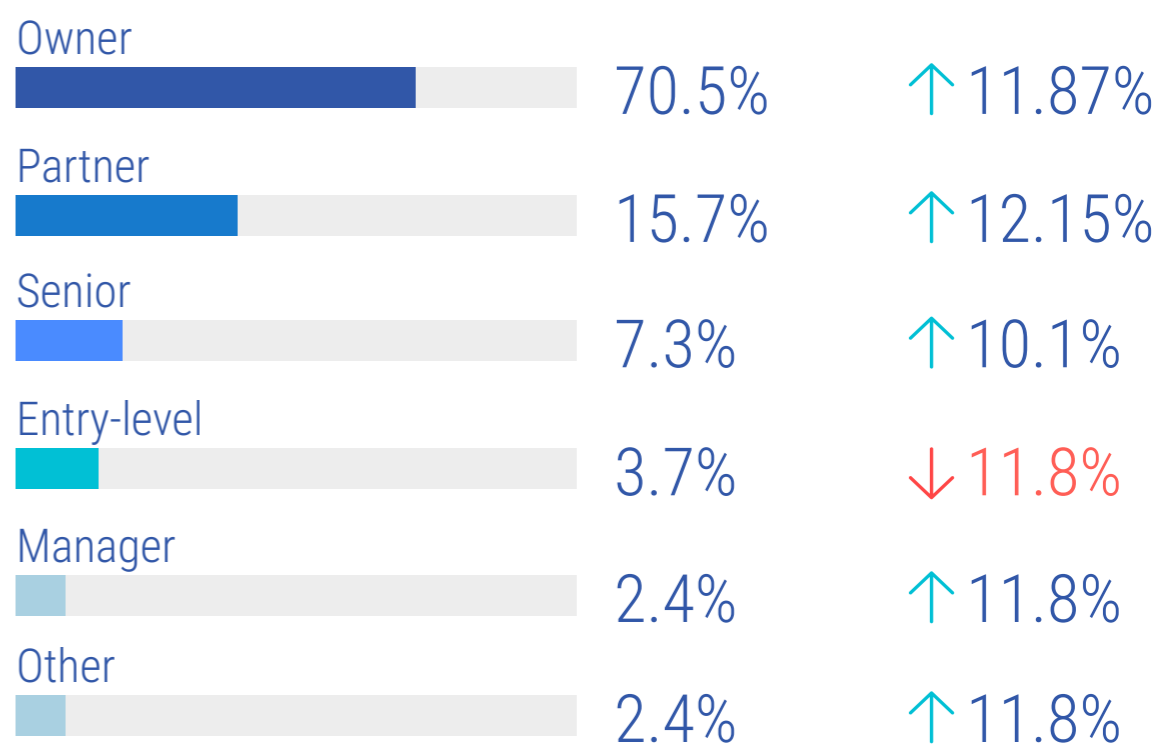
Owner

70.5

of your network

↑ 8.21%

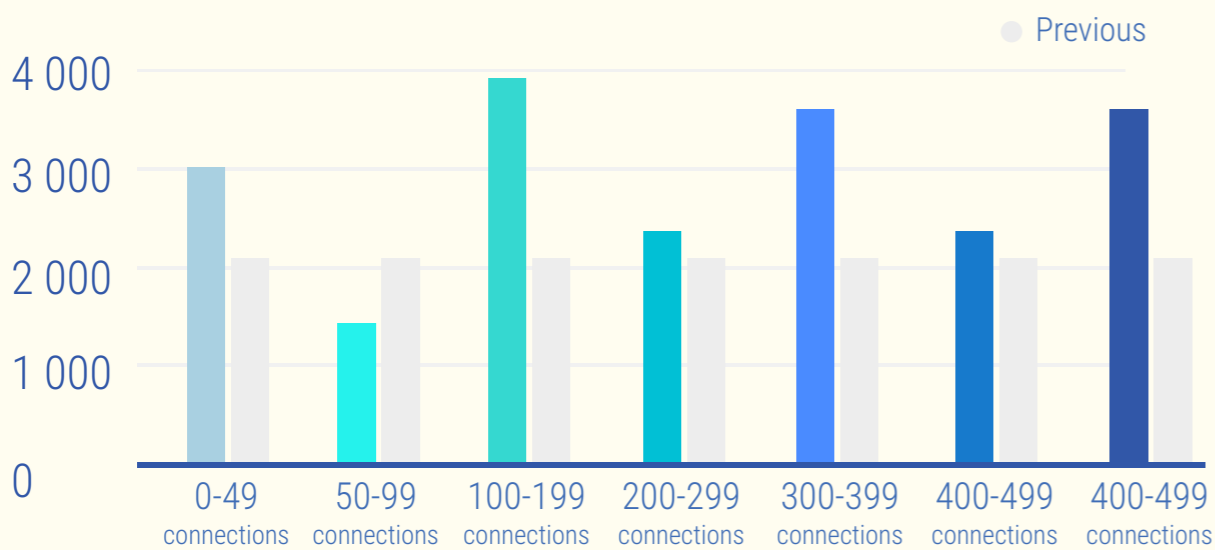
Previous: **65.8%**



in Source: whatagraph.com | ID: 6565313

## Network size distribution

Network size average of people who commented on your updates



in Source: whatagraph.com | ID: 6565313

## Total network size of commenters



21 848

Connections

↑ 27.21%

Previous: **14 987**

in Source: whatagraph.com | ID: 6565313

## Post impressions

The number of times your ads were shown

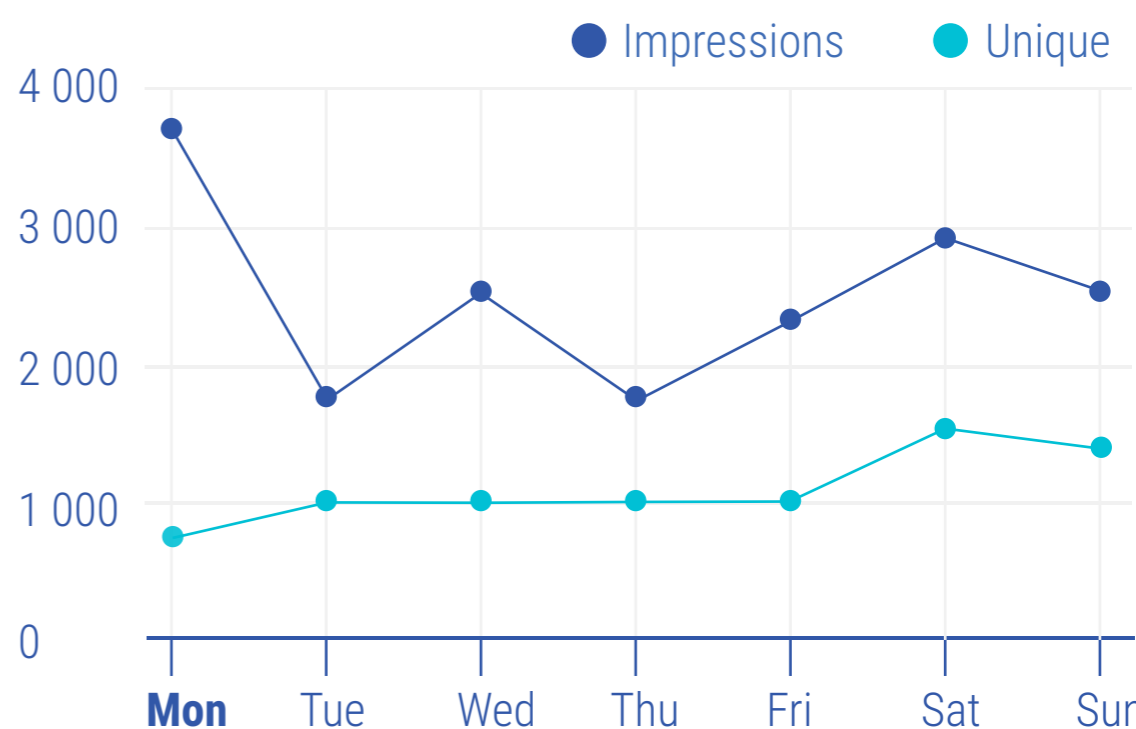


587 258

Impressions

↓ 7.6%

Previous: **5.3 M**



in Source: whatagraph.com | ID: 6565313